

# EDUCATING THE GIFTED & TALENTED

3 DAY COURSE

THURSDAY 9 MAY,  
THURSDAY 20 JUNE &  
THURSDAY 25 JULY 2024

9.00am - 3.30pm  
(sign-in from 8.45am)

**Carmel School**  
123 Cresswell Road, Dianella

*Growing Up Greatness*

This course is appropriate for primary and secondary (including GAT) teachers, coordinators and school leaders who want a comprehensive understanding of gifted and talented education. This course includes all aspects of the entry-level Gifted and Talented Professional Learning Modules (developed by GERRIC with DEEWR) as well as up-to-date research, strategies and time for practical planning.

A separate one-day specialist course (Leading Gifted and Talented Education: Moving from the basics to excellence) is available for staff who have completed this three-day course and for those who have an expert-level understanding of gifted and talented education.

## **COST**

\$495 per person OR

\$2025 for a group of 5.

*15% discount for Growth Coaching Community Members (use your discount code when booking)*

Morning tea and lunch will be provided.

## **REGISTER**

There are limited spaces available for this course, so please register early by clicking below or via Sticky Tickets: [www.sticktickets.com.au/9YFJF](http://www.sticktickets.com.au/9YFJF)

**REGISTER NOW**

## **MORE INFORMATION**

Please contact Kylie Bice at [admin@growingupgreatness.com](mailto:admin@growingupgreatness.com) or on 0432 179 629 if you have questions about this event, or to negotiate a price for groups larger than 10.



Can't get to this course in Perth? Why not have a look at our [Gifted and Talented Education Online Professional Learning Series](#) instead?



## OUTLINE

---

# What to expect over 3 days

This is a comprehensive course covering all aspects of educating gifted and talented students, including:

### DAY ONE – 9 May 2024

- What do we mean by gifted and talented and what are the characteristics of these students?
- How do we identify gifted and talented students?
- How do we track the growth of these students to ensure we are making an impact on their learning journey?

### DAY TWO – 20 June 2024

- Social and emotional characteristics and needs of gifted and talented students.
- Underachievement and strategies to identify and manage this.

### DAY THREE – 25 July 2024

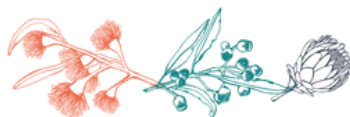
- Designing challenging learning experiences for gifted and talented students, including questioning, differentiation, high order thinking, and assessment (pre, formative and off-level).
- Designing program options for gifted and talented students, including grouping, acceleration options, and compacting, mentoring and alternative options.

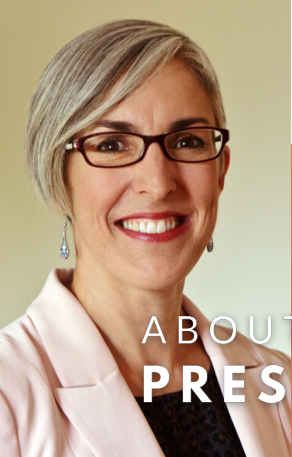
“

*Some of the most valuable learnings that I was able to take away from the PD included understanding the social/emotional needs of gifted and talented students, the conceptualisation of how to accurately pitch work to students based on their above-average ability and needs and the teachings in relation to creative tiered marking rubrics.*

- Christopher Walke, English Teacher (Fremantle College, 2019)

”





## ABOUT THE PRESENTER

### **Kylie Bice (BA, DipEd, MEd)**

is an experienced and award-winning teacher and scholar, and is now Director and Education Consultant with Growing Up Greatness.

Kylie specialises in gifted education, differentiation, assessment, disability and educating diverse student groups. Kylie was previously the Senior Inclusive and Gifted Education Consultant at the Association of Independent Schools of WA, and has many years of experience working with diverse students in government and non-government schools in Western Australia, including students with learning difficulties, disability, gifted and talented and twice-exceptional (2E). Kylie has delivered professional learning to a range of audiences, schools, national and international conferences.

## ABOUT US

### **GROWING UP GREATNESS**

Growing Up Greatness has a deliberate aim to identify and build intentional, transparent and research-based quality teaching in every classroom. Context-specific, strategic, whole-school review & planning to include and create opportunities for students of all learning needs and abilities in every classroom and context. Services can be customised to suit the needs and context of your school, organisation, classrooms, students, strategic goals and educational philosophy.

### **MORE INFORMATION**

[www.growingupgreatness.com](http://www.growingupgreatness.com)

### **GET IN TOUCH**

Contact Growing Up Greatness at [admin@growingupgreatness.com](mailto:admin@growingupgreatness.com)

