

# Inclusive Leadership 2016 Series

Best Practice, driving the way forward for Inclusive Schools

What all School Leaders need to know

Back by popular demand a further opportunity for leaders to participate in the very successful Inclusive leadership series run in previous years.

(This series is for leaders who have NOT previously attended.)

A series of practical, challenging and visionary workshops for Principals, School Leaders, Deputy Principals and Head of Departments to explore key principles and practices of leadership for Inclusive Schools. Designed to allow leaders to reflect, review and further develop a strategic plan for inclusivity in their school.

## The series will focus on

- \* Whole school strategic planning
- \* Student voice
- \* Effective use of Education Assistants
- \* Data collection and informed decision making
- \* Cultivating a culture of inclusivity through strategies that support and mentor teachers in inclusive practice and pedagogy.

## Professional opportunities

- \* The chance to engage with leading academics in inclusive education.
- \* Networking opportunities with colleagues and other professionals.

## 2016 DATES

Please register by 15th of February 2016

Registration is for whole series. Participants must attend all 4 professional learning days

### Day 1 – Friday 19<sup>th</sup> February

**Dr Ben Whitburn** – The reality of inclusive education  
How research and best practice can inspire and equip schools to better achieve Inclusion, with a focus on the effective use of Education Assistants, Student voice and

### Day 2 – Friday 13<sup>th</sup> May

**Kylie Bice - Planning for greater inclusivity – Whole School Planning**  
An introduction to the Inclusive Education School Assessment Tool (IESAT) and how to plan for a greater school culture of inclusivity.

### Day 3 – Friday 5<sup>th</sup> August

**Ruth Phillips – Good to Great Schools – Whole school planning in action.**

Inclusion as the whole school's business: identify and overcome barriers to inclusive practice using the Inclusive Education School Assessment Tool (IESAT), using data effectively, short and long term planning.

### Day 4 Friday 28<sup>th</sup> October

**Kylie Bice – Time to reflect and plan for the future**  
Strategic Planning for Inclusion, how strategic planning for inclusion will shape your school into the future and ensure progress is measurable and sustainable over time.

**The Inclusive Education Team, Michelle Bishop, Mick ten Haaf, Claire Sly, Tania Wray and Maggie Balfe will support schools throughout the leadership series and will provide support to schools between workshops to achieve their short and long term goals.**

**All participants will receive a Resource folder, and books by leaders in the field to support their journey to greater inclusion.**

This professional learning series has direct links to:

- AITSL Australian Professional Standard for Principals and the Leadership Profiles (Professional practice - Leading improvement, innovation and change)
- AITSL Australian Professional Standards for Teachers
- National Plan for School Improvement (Reform area - Empowered School leadership)
- Department of Education Services, Non-Government Schools Registration Standards and Requirements 2015 (Criteria 2 – Student learning)
- Legislative Framework for students with disability (DDA, 1992; DSE, 2005)

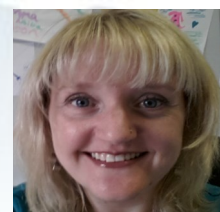
## Dr Ben Whitburn - Dr of Philosophy (Education)



Ben Whitburn is an early career researcher and lecturer in inclusive education in the Faculty of Arts and Education at Deakin University. Ben's background in education extends more than ten years teaching students with and without disabilities of secondary and higher education. More recently, Ben has been involved in developing and delivering the inclusive education pathways units of the Master of Teaching at Deakin University. As a disabled scholar, Ben examines inclusive education policy and practice for its capacity to promote equal opportunities for young people with disabilities. Drawing on the perspectives of people who live with disability, Ben's research seeks to develop inclusive practice in education that addresses in particular inaccessible built and online learning environments, pedagogy and social marginalisation. Ben has a published record of research in the field of inclusive education, for which he was the recipient of the American Educational Research Association's Disability Studies in Education Junior Scholar Award in 2014. Ben holds an advisory role on the Deakin University Digital Accessibility Committee, as well as the editorial review boards of national and international journals including The International Journal of Inclusive Education, The International Journal of Whole Schooling and the Australasian Journal of Special Education.

## Dr Claire Spicer

Dr. Claire Spicer is the Course Director of the Master of Education, Special Educational Needs, at Deakin University. Additionally, she is the stream coordinator of Inclusive Education and the Chair of Psychology (Education). Claire is experienced in primary, secondary and tertiary education and her research focus is self-efficacy and all areas of non-mainstream education, specifically exceptional learners - those with learning, behavioural and emotional concerns; gifted; and gifted-learning disabled students. Claire runs her own psych practice tailored to working with schools, educators, parents, and children, feared to be 'at risk'.



## Ruth Phillips

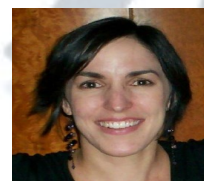


Ruth Phillips (nee Targett) She has a Masters of Education from the University of New South Wales, post graduate qualifications in Psychology and is currently undertaking her PhD in Education at the University of Wollongong. Ruth is the 7-12 Gifted Coordinator at her school, and has also taught self contained and mixed ability classes from Middle School through to Year 12 in government and independent schools. Ruth has worked on a number of educational projects at a system level, including work on assessment, resilience in learners and curriculum differentiation. She is the co-author of an educational text on curriculum differentiation and Module 2 of the Australian Government's Gifted and Talented Teaching Package. Ruth is an invited lecturer in the Certificate of Gifted Education at the University of New South Wales, and has presented papers at national and international education

conferences. Ruth also presents professional learning for corporate environments on leadership, change and managing effective teams.

## Kylie Bice

Kylie Bice, Education Consultant with *Growing Up Greatness* [www.growingupgreatness.com](http://www.growingupgreatness.com). Kylie Bice is an experienced Education Consultant specialising in gifted education, differentiation, thinking skills, and educating diverse student groups. Kylie is an excellent presenter who has delivered professional learning to a range of audiences and schools over many years, and has delivered presentations at national and international gifted education conferences.



## The Details:

**Venue:** Telethon Speech and Hearing Centre  
33 Dodd Street Wembley 6014

**Time:** 8.30am – 4.30pm (Registration from 8.15am)

**Cost:** \$660.00

*Morning Tea and Lunch Included*

Please register at [www.ais.wa.edu.au](http://www.ais.wa.edu.au)

**For more information please contact Michele [ie@ais.wa.edu.au](mailto:ie@ais.wa.edu.au) or 0894411666**

Please view Professional Learning Terms and Conditions on the AISWA Website.



Follow us on Facebook

[AISWA Inclusive Education](http://www.aiswa.edu.au)