

Calling all schools in WA



THE BIG Splash WA



A Wild in Art event brought to you by Perth Children's Hospital Foundation

Mentally Healthy WA

An urgent need to educate and innovate

- Young people in Western Australia identify mental health as one of the three most important issues in Australia today. An alarming 13% of young people identify that suicide is an issue of personal concern.
- In WA, there have been increasing levels of self-harm and suicidal thoughts among young people. Four times as many young people (particularly 14 and 15 year olds) present to Emergency Departments in crisis, with repeated self-injury and attempted suicide compared to five years ago.
- Mental health issues in children and young people tend to be minimised and not spoken about, with persisting feelings of shame and stigma in families which leads to a lack of advocacy for services and research in this vital area.
- Early intervention is critical, which is why Perth Children's Hospital Foundation, the official fundraising body for Perth Children's Hospital and advocate for positive health messaging, has joined with the clinical experts at Perth Children's Hospital and Wild in Art to create The Big Splash.

To view Teagan's story and download the campaign brochure, go to TheBigSplashWA.com.au



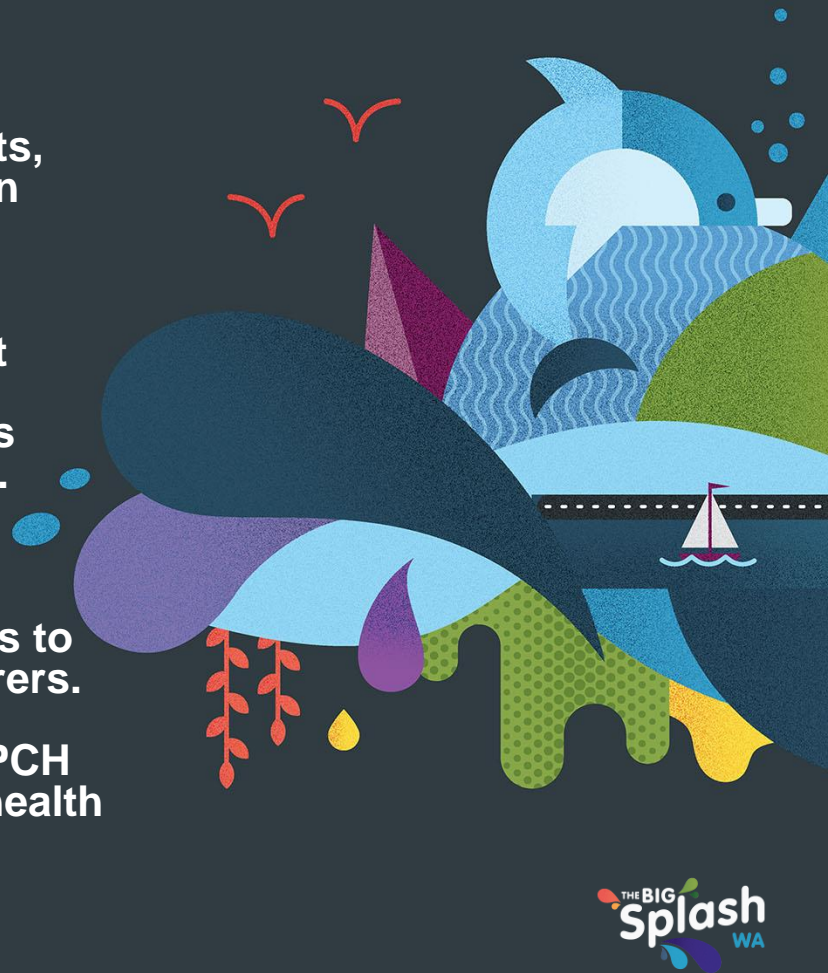
The Big Splash WA

A vibrant art event that will take place in the streets, parks and public spaces of Perth and surrounds in winter/spring 2017.

A huge pod of wildly colourful dolphin sculptures painted by local artists will swim into town as part of a mass public art exhibition to raise mass awareness and valuable funds for Perth Children's Hospital, Child and Adolescent Mental Health unit.

An integral part of this program is a schools component to educate in an engaging and artistic manner, and allow sometimes difficult discussions to begin between children, teachers, parents and carers.

Funds raised will initiate innovative programs at PCH for children and adolescents with severe mental health disorders who are at significant risk.



Calling all schools in WA

- The education program is open to all schools in WA, allowing necessary education through the arts. It is a fantastic opportunity for schools to re-engage students, carers, parents and teachers in whole school, whole-community conversations around a very serious issue you all know we are facing today.
- Participating schools will receive a small dolphin which will be decorated by students and teachers in Term 3, 2017. School sculptures can then be publically exhibited at 'The Farewell' event in Oct 2017 alongside the large trail dolphins, which are decorated by artists and form the vibrant art event, The Big Splash.
- Fun education packs will also be made available to participating schools, putting creativity at the heart of the program. These packs, designed by PCH Foundation in collaboration with PCH mental health experts and Mentally Healthy WA, will be age appropriate and give schools a great vehicle to engage everyone. The packs will include guidelines to protect and promote mental health and wellbeing through the message of Act-Belong-Commit (the theme for Mental Health Week this year).
- Strategic frameworks and programs available for school integration will be listed.



- Our community will see that they are not alone and help is available. Information on mental health organisations that are able to address child and adolescent mental health issues will be provided.
- Schools will be updated on all events for The Big Splash, providing opportunities for outings and so much more.

“Along with developing Literacy and Numeracy skills a student's mental health is the greatest priority of teachers. Students need to feel safe, have a resilient nature and have the ability to interact in all areas with their peers. It is an unfortunate fact that teachers on a daily basis see students who face mental health issues that do and will affect their future lives. As educators and community members we are responsible for our future generations. With the pressures from our complex world squarely on the shoulders of our young, we must work to listen to children and provide resources and programs to assist them on their journey.

Innovative programs such as The Big Splash WA, organised by the Perth Children's Hospital Foundation, speak to children in their language.”

Stephen Breen
President
Western Australian Primary Principals’
Association

WAPPA



“Perhaps it's just that we are now more aware of it, but over recent years I believe that the increase, impact and severity of mental health issues we are seeing in our society is being reflected more and more in our schools. This is an issue that needs to be acknowledged and addressed. Using an education medium like the arts and strategies such as The Big Splash WA project to engage families and start the conversation, is definitely a step in the right direction.

Anyone can hand out a brochure - but ensuring that the information within that brochure is taken seriously is the challenge. Making sure the message is heard is a task for us all. That's why WASSEA is happy to be working with other organisations including the PCHF to ensure that this happens.”

Armando Giglia
President
Western Australian Secondary School
Executives Association

WASSEA



” A positive school community, social and emotional learning for students, working with parents and carers and helping children with mental health difficulties all have a positive impact on children’s mental health. Supporting the mental health and wellbeing of students is important to schools as children who are mentally healthy learn better and achieve more, are motivated and committed, have positive relationships and are better able to meet life’s challenges. Promotion, prevention and early intervention are central to improving outcomes for children’s mental health.

Principals Australia Institute is proud to be collaborating with the Perth Children’s Hospital Foundation on The Big Splash project, as it will certainly assist in increasing awareness, reducing stigma and increasing help seeking by children and adolescents who may be experiencing mental health difficulties.”

**Adrienne Richardson
State Manager WA
Principals Australia Institute**

PAI



Easy steps to take:

- Step 1 Select your chosen Package shown on page 9, and complete the School Order Form on page 10.
- Step 2 Payments need to be processed **prior to 23 Nov 2016** due to ordering and shipping timelines.
- Step 3 Collect your dolphin from a Perth Metro Area. Expected date is **May 2017***
- Step 4 Opportunity to visit the 'Art Hub' in Perth City **26 June – 9 July 2017 *** to view artists in action.
- Step 5 Decorate your dolphin in **Term 3 2017**, and use the education packs provided to educate and engage your kids and their families in mental health discussions.
- Step 6 Walk the 'Dolphin Trail' **11 Aug – 6 Oct 2017***. Trail maps and phone apps will be made available.
- Step 7 Opportunity to display your school dolphin at 'The Farewell' in **Oct 2017 *** alongside the large trail dolphins, after which you can take back to your school to showcase.

* All dates to be confirmed early 2017



Above: an example of the large dolphin sculpture used on the art trail together with a smaller dolphin sculpture sent to schools.

There are two packages available:



The Standard Package

- A school dolphin sculpture to decorate with your own unique design.
- Fun education packs for relevant school ages which encourage in-class creative thinking, templates to explore students design ideas, guidelines to protect and promote their mental health and wellbeing through the message of Act-Belong-Commit.
- Opportunities for staff and children to participate in The Big Splash events throughout 2017.
- Perth Children's Hospital (PCH) is the beneficiary of The Big Splash WA. Please note that the costs for involvement in the project do not include any donations to PCH or PCH Foundation.
- Dolphin sculptures will need to be collected from the Perth Metro area.
- \$1,200.00 + GST

The Plus Package

- Everything in the standard package, plus
- The opportunity to sponsor another school that might not otherwise be able to participate.
- \$2,400.00 + GST



Images: previous international school programs have included owls (left) and pandas (right)

The Big Splash WA Schools Order Form:

To confirm your order, please complete the form below and email it to BigSplash@pchf.org.au or fax it to (08) 9489 1199.

If you would like to chat to someone, please call Deirdre or Karen on (08) 9489 1100.

- School: _____
- Invoice Address: _____
- _____ Post Code: _____
- Contact: _____ Tel: _____
- Email: _____

By signing below, we agree that Perth Children's Hospital Foundation will forward the final agreement and invoice/receipt to us as set out per the order below. We also acknowledge that payment must be made **before 23 November 2016** due to ordering and shipping timelines.

Tick to order
The Standard Package
\$1,200.00 +GST

☐

Payment Options

☐

Visa

☐

Mastercard

☐

American Express

☐

Please invoice

Credit Card Number

Tick to order
The Plus Package
\$2,400.00 +GST

☐

Credit Card Exp Date

/

Credit Card CCV

Pickup is Perth Metro area

Signature