

GIFTED AND TALENTED EDUCATION

2021 ONLINE PROFESSIONAL LEARNING SERIES

THURSDAY 4 MARCH

Who are the gifted and talented?

MONDAY 22 MARCH

Understanding Acceleration for Gifted and Talented Students

THURSDAY 29 APRIL

Becoming a detective: Searching for and identifying the gifted students at your school

WEDNESDAY 26 MAY

Why gifted students underachieve

TUESDAY 22 JUNE

Catering for 2E (Twice-Exceptional) Students in the Classroom

MONDAY 2 AUGUST

Designing Learning Experiences for Gifted and Talented Students

THURSDAY 2 SEPTEMBER

How is a great question like chocolate ice cream?

WEDNESDAY 20 OCTOBER

Gifted in the Early Years

Growing Up Greatness

There are many aspects to understanding, identifying and effectively catering for the needs of gifted and talented students. The modules in this online course cover all the key aspects and are suitable for early learning, primary and secondary teachers and school leaders who want to increase their knowledge of gifted and talented learners, including characteristics, why they underachieve, twice-exceptionality, implementing acceleration options and designing appropriate learning experiences. Each module contains a video you can watch in your own time and workbook to complete at your own pace, plus an interactive webinar with the presenter Kylie Bice to clarify and discuss ideas that emerged from the video, and how to apply these in your practice.

COST

One module - \$65 per person or \$290 for a group of 5

Complete series - \$495 per person

Each module will be approximately 2 hours in length (including video content, workbook and 1 hour webinar). The webinars will all run from 3:30 to 4:30pm.

WHAT IS INCLUDED

You can register for just the topics that interest you, or if you register for the whole series you will also have access to:

- Videos from the whole series to watch and review at any time during the 12 month period you are registered
- Exclusive access to additional resources, research articles and prompts to guide your practice
- Exclusive access to online group networking to discuss, review and share your practice with others

HOW TO REGISTER

You can join the full series at any time of the year as modules can be done in any order over a 12 month period. Or you can complete one or more individual modules.

**REGISTER FOR THE
COMPLETE SERIES**

**REGISTER FOR
INDIVIDUAL MODULES**



Modules

1. Who are the gifted and talented?

An overview of the basics of understanding gifted and talented students. We will explore the definitions of 'giftedness' and 'talent', including Gagne's DMGT model and examine the characteristics of gifted students, including how they learn, develop and thrive. We will also look at their complexities and quirks, and the possible impact of these on their learning, development and wellbeing, including introducing local and international resources you can access for further information and research. If you are a teacher or parent who is new to the world of gifted and talented, this module is the place to start!

2. Understanding Acceleration for Gifted and Talented Students

Acceleration is often misunderstood as just 'grade-skipping' and despite overwhelming evidence of its efficacy, teachers and schools continue to be reluctant to consider this strategy as an option for certain highly able students. This workshop will explore the research behind acceleration, the types of acceleration and key strategies to ensure acceleration is implemented appropriately and effectively for the right students, in order for them to experience a challenging learning environment while at school.

3. Becoming a detective: Searching for and identifying the gifted students at your school

So many of our gifted students are hiding in classrooms, either underperforming, underachieving or opting out of schoolwork due to boredom, frustration or hidden disability. This online workshop will explore how to identify gifted students in your school using characteristics, available data and off-level testing. The aims of this workshop are:-

- To better understand the data you are currently collecting-
- To improve your capacity to identify gifted students through their behaviours and characteristics; and-
- To learn more about alternative assessment options, including off-level testing

4. Why gifted students underachieve

This professional learning event is designed for primary and secondary classroom teachers and school leaders who are looking to better understand the profile of gifted underachievers, including key reasons for underachievement and strategies that schools and teachers can implement to turn this around. If you have ever wondered why you are not seeing the ability of a gifted child in your class, or are frustrated with students who do not seem to be fulfilling their potential, then this professional learning will help you to understand how schools and teachers can identify and work with students whose potential is yet to be uncovered.



Modules cont...

5. Catering for 2E (Twice-Exceptional) Students in the Classroom

Twice-exceptional (2E) students are those who are gifted and also have a disability or other challenge. These are students whose potential often remains undeveloped and for whom the school experience is extremely frustrating. As such they present unique challenges for educators and schools and it is important to understand their individual profile in order to offer the best educational options. This professional learning event will explore how to identify 2E students and how to best support their strengths and challenges in classrooms and the school environment.

6. Designing Learning Experiences for Gifted and Talented Students

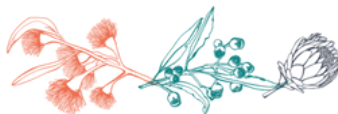
This professional learning is designed to give teachers increased understanding of the intellectual learning needs of gifted and talented students and confidence to design learning experiences. Teachers will explore the implications of Passow's Rule, and examine options such as differentiation, compaction and high order thinking in order to provide appropriate challenge for gifted and talented learners.

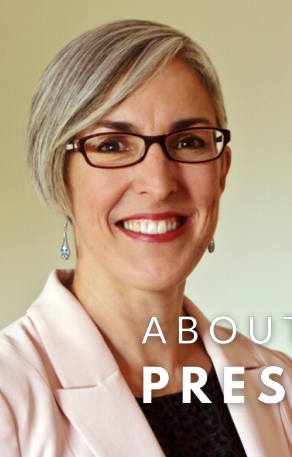
7. How is a great question like chocolate ice cream?

How to design and use essential questions to create high order, inquiry-based and engaging units of work for gifted and talented students. Using essential questions is a key strategy for designing challenging units of work for gifted and talented students, and a study of NSW schools with high-quality differentiated practice found that one of the common elements was their use of essential or 'big picture' questions to design learning and engage students. In this practical workshop we will explore how to use resources such as Bloom's Taxonomy, SOLO Taxonomy and the Williams Model to create essential questions, and how to link these to differentiated questioning and success criteria.

8. Gifted in the Early Years

An understanding of gifted education and the unique ways that gifted students develop and learn, is key to effectively catering for their diverse needs in the early years of schooling. This workshop will provide information about the characteristics of gifted children in the early years, and the impact of their unique profiles in a play-based environment. Strategies to cater for gifted students in Kindergarten, Pre-Primary and Year 1 classrooms will be discussed, including the option of acceleration.





ABOUT THE PRESENTER

Kylie Bice (BA, DipEd, MEd)

is an experienced and award-winning teacher and scholar, and is now Director and Education Consultant with Growing Up Greatness.

Kylie specialises in gifted education, differentiation, assessment, disability and educating diverse student groups. Kylie was previously the Senior Inclusive and Gifted Education Consultant at the Association of Independent Schools of WA, and has many years of experience working with diverse students in government and non-government schools in Western Australia, including students with learning difficulties, disability, gifted and talented and twice-exceptional (2E). Kylie has delivered professional learning to a range of audiences, schools, national and international conferences.

ABOUT US

GROWING UP GREATNESS

Growing Up Greatness has a deliberate aim to identify and build intentional, transparent and research-based quality teaching in every classroom. Context-specific, strategic, whole-school review & planning to include and create opportunities for students of all learning needs and abilities in every classroom and context. Services can be customised to suit the needs and context of your school, organisation, classrooms, students, strategic goals and educational philosophy.

MORE INFORMATION

www.growingupgreatness.com

GET IN TOUCH

Contact Growing Up Greatness at admin@growingupgreatness.com

