

Study Tour London and Barcelona

For AISWA School Leaders

Tuesday 29 September to Thursday 8 October 2026



Welcome Message

Come join us in the Term 3 school holidays on a trip to the amazing cities of London and Barcelona! Experience a unique and enriching study tour, where we will visit different schools known for innovative approaches, engage in deep learning through workshops and discussion panels, and go on cultural excursions.

The two main events of this tour will be a three-day leadership intensive at the University College London, held by the renowned Faculty of Education and Society, where we will engage with education experts, researchers, and school leaders from around the world, and a two-day immersive experience at Learnlife, a unique school located in Barcelona that implements research and best learning approaches worldwide into their classrooms.



Kris Stafford
DIRECTOR CURRICULUM
AND PEDAGOGY



Helen Aguiar
DIRECTOR SCHOOL
PROGRAMS AND SERVICES

Throughout this experience, participants will,

Engage in deep learning through workshops, panel discussions and case studies,

Visit schools known for their innovative approaches and programs,

Undertake cultural excursions with links to education and learning,

Spend time personally reflecting and action planning, and

Engage in meaningful networking with like minded educators from across the WA Independent sector, and forge ongoing professional relationships.

DATES:

29 September to
8 October 2026

DURATION:

10 days with additional days for
travelling to and from Australia

REGISTRATION:

Closes 20 March 2026

COST:

The cost of the tour program, inclusive of the educational programs in London and Barcelona, (including morning tea and lunches), opening tour sundowner, final tour dinner, and bus transport to schools in both destinations is \$7,300.

Tour participants are responsible for their own travel costs, including flights, accommodation, insurance, meals (outside of what will be provided) and incidentals.

A deposit of \$3,500 is due Friday 27 March 2026. This trip is open to both members and non-members of AISWA, but please be aware that priority will be given to AISWA members if the tour becomes oversubscribed.

**If you are interested, scan
or click the QR code**



Itinerary London

SATURDAY & SUNDAY 26-27 SEPT

TRAVEL DAYS

MONDAY 28 SEPT

TOUR SUNDOWNER – TIME AND VENUE TBC

TUESDAY 29 SEPT

UCL PROGRAM DAY 1

9.00 – 9.30	Welcome to UCL IOE & the national context for school improvement
9.30 – 11.00	Masterclass 1: Why leadership matters
11.00 – 11.15	Break
11.15 – 12.00	Preparing for School visits
12.00 – 13.00	Lunch
13.00 – 15.30	School visit 1

WEDNESDAY 30 SEPT

UCL PROGRAM DAY 2

9.30 – 11.00	Masterclass 2: Transforming leadership learning
11.00 – 11.15	Break
11.15 – 12.00	UCL Campus Tour
12.00 – 13.00	Lunch
13.00 – 15.00	School visit 2

THURSDAY 1 OCT

UCL PROGRAM DAY 3

9.30 – 12.00	School visit 3
12.00 – 13.00	Lunch
13.00 – 14.30	Masterclass 3: Designing, developing, and caring for your workforce
14.30 – 14.15	Break
14.15 – 15.15	Reflections
15.15 – 16.00	Certificates and Farewell

FRIDAY 2 OCT

OPTIONAL SCHOOL VISITS/ FREE TIME

Example of possibilities: School 21 and School 360

SATURDAY 3 OCT

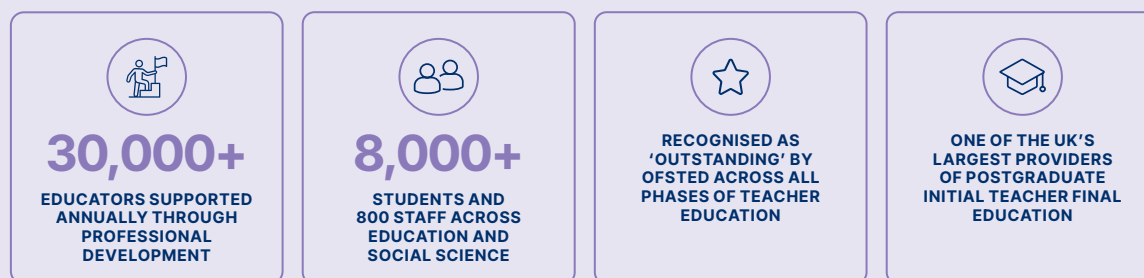
OPTIONAL CULTURAL ACTIVITIES/ FREE TIME

SUNDAY 4 OCT

OPTIONAL CULTURAL ACTIVITIES/ FREE TIME/TRAVEL DAY





University College London (UCL)



About the UCL Institute of Education

IOE is ranked #1 globally for education in the QS subject rankings—for the 12th year running. As part of UCL, a top 10 university worldwide, IOE is a hub of excellence in teaching, research, and policy influence.

We work in partnership with the UK Government to deliver national teacher induction and leadership programmes, and lead major initiatives including:

-  The £15m National Consortium for Languages Education
-  The Mandarin Excellence Programme

IOE's research is ranked #1 in the UK for both power and strength, with most rated world-leading. Our work shapes education policy and practice across continents—from early years to school leadership.

UCL Centre for Educational Leadership

CEL is the UK's largest higher education centre for educational leadership, with a strong international presence. We teach Master's programmes in educational leadership and supervise a number of doctoral students with a wide range of leadership interests. We are one of the largest providers of the UK Government's Early Career Framework (ECF) and National Professional Qualifications for Leadership (NPQs); some 30,000 new and experienced teachers and leaders are part of these programmes annually. Our expertise spans educational leadership and leadership development, school system reform, school improvement and evidence-informed practice across the UK and internationally.

What can you expect?

During this 3-day study visit you will participate in educational masterclasses lead by academic staff based at the Centre for Educational Leadership and undertake school visits to state schools in London.

Masterclasses

Masterclasses brings together international research, practical case studies, and expert insights to deepen understanding of effective school leadership. Masterclass 1 explores why leadership is critical to successful educational reform, highlighting what drives positive student outcomes and showcasing a four-phase school improvement model through the experiences of leading English school executives. Masterclass two explores innovative leadership development approaches used in England and abroad to foster a culture of teaching excellence, inviting participants to reflect on how these strategies apply to their own contexts. The final masterclass focuses on designing, developing, and supporting a thriving workforce, emphasising the central role of teacher wellbeing, professional culture, and resilience in sustaining improvement and strengthening teacher engagement and retention.

School visits

You will visit 3 state-funded primary and secondary schools in London, serving pupils aged 4 to 16 and following the National Curriculum. This includes core subjects such as English, mathematics, science, design and technology, physical education, computing, and modern languages. During the visit, you will tour the school, observe classroom teaching, and engage with school leaders and staff. They will share insights into leadership strategies that promote interdisciplinary learning, creativity, and innovation across the curriculum. There will also be opportunities for discussion and questions to deepen your understanding of the UK education system. Prior to the visits, participants will receive guidance to help identify key areas of practice to observe and questions to explore.

Itinerary Barcelona

MONDAY 5 OCT

TRAVEL DAY – LONDON TO BARCELONA OR FREE TIME IN BARCELONA

Afternoon debrief of London experience

TUESDAY 6 OCT

LEARNLIFE DAY 1 – URBAN HUB & VILLAGE HUB

9.00 – 9.30	Welcome & Introduction Circle @ Urban Hub
9.30 – 9.40	Guided visit of the Urban Hub
10.50 – 11.30	Bus transfer to Village Hub
11.40 – 12.50	Guided visit of the Village Hub
13.00 – 14.30	Lunch
14.40 – 15.40	Exploring the “Why” – Life-Ready vs. Future-Ready Learners @ Village Hub
16.00 – 16.40	Bus back to Urban Hub + Q&A on the bus
16.45 – 17.45	How Do We Measure Learning? Learning Vitae & Assessment @ Urban Hub
18.00	End

WEDNESDAY 7 OCT

LEARNLIFE DAY 2 – ECO HUB & WRAP-UP

8.50	Meeting point @ Urban Hub
9.00 – 9.30	Bus transfer to Eco Hub
9.30 – 10.45	Guided visit of the Eco Hub
11.00 – 12.30	Structuring Curriculum for Meaningful Learning @ Eco Hub or external venue
13.00 – 14.30	Lunch
14.45 – 15.15	Bus transfer
15.20 – 16.30	Wrap-up Session: Reflections & Next Steps
16.45	End

THURSDAY 8 OCT

OPTIONAL – SAGRADA FAMILIA VISIT OR FREE TIME

End of tour lunch/ dinner TBC

FRIDAY 9 OCT

FREE TIME OR TRAVEL HOME



Acknowledgement of Country

AISWA respectfully acknowledges the traditional custodians of the land on which we operate, the Wadjak people of the Noongar nation. We pay our respects to Aboriginal Elders past, present, and emerging, as the Traditional Owners of the lands across Australia and acknowledge their continued connection to the land, waters, and community.

We recognise that a strong and mutually beneficial relationship with Traditional Owners is essential to our success and to the benefit of our community. In all our actions, we commit to fostering cultural awareness and working collaboratively towards a shared future of reconciliation, respect, and prosperity.

ASSOCIATION of INDEPENDENT SCHOOLS of WESTERN AUSTRALIA

Suite 3/41, Walters Drive, Osborne Park, Western Australia, 6017

TELEPHONE (08) 9441 1600 | **ais.wa.edu.au**

