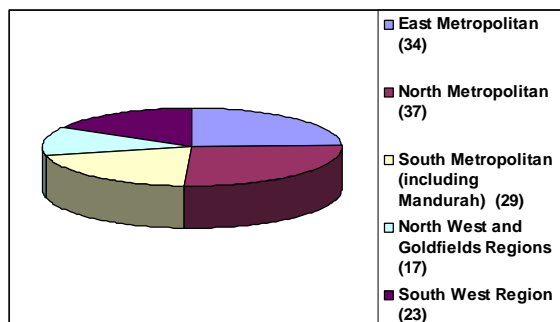




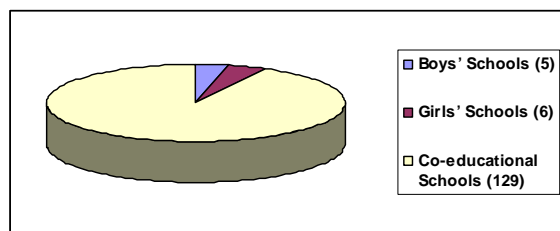
## What do you know about Independent Schools in Western Australia?

There are 140 independent (non-Catholic) schools located throughout Western Australia which enrol over 55,000 students.

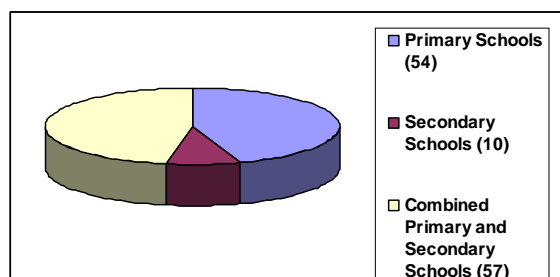
### By Region:



### By Gender:



### By Range:



### Boarding:

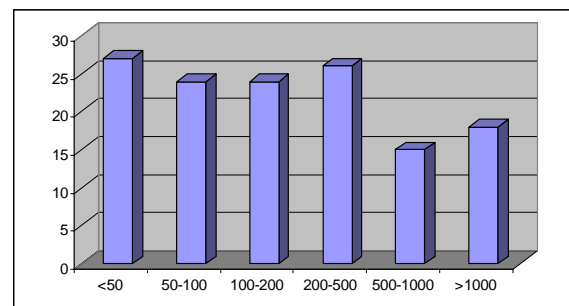
16 member schools are Boarding Schools. 11 are located in the metropolitan area with one in Bunbury and one in Albany. There are three boarding schools for indigenous students located in Coolgardie, Esperance and Meekatharra.

The five schools located outside metropolitan Perth offer boarding to both girls and boys while those in Perth are single sex.

### Sizes:

Schools vary in size from those with fewer than 50 students to those with over 1,000 students.

The chart below illustrates the variation of school size within the sector.



### Affiliations:

Schools have a variety of affiliations. There are:

- Aboriginal Independent Community Schools
- Schools affiliated with Christian denominations such as:
  - Anglican, Baptist, Catholic, Greek Orthodox, Lutheran, Seventh Day Adventist and Uniting Church Schools*
- Non denominational Christian Schools
- Islamic Schools
- Jewish Schools
- Montessori Schools
- Reggio Emilia Schools
- Rudolf Steiner Schools
- Community Schools
- The Telethon Speech and Hearing Centre for Children WA (Inc)

## Where do the students in independent schools come from?

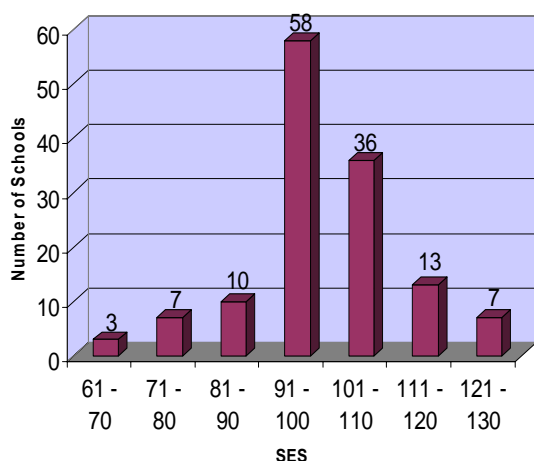
The families who enrol their children in independent schools cover the full socio-economic range. They pay the fees from their after tax income and for many families this requires a financial sacrifice.

One illustration of the diversity of the students who attend independent schools is the schools' socio economic status ranking or SES. It is calculated from information obtained from the Australian Census and is used as the basis of funding from the Australian Government.

The addresses of the families attending each school are linked to Census Collector Districts or CCD (a CCD covers about 250 houses). The information used is the income of households and the level of education and the occupation of the people who live in the district. This is then aggregated for each school.

So, a school's SES depends not on the school's location but on the areas in which its students live.

### **Distribution of SES for Independent Schools in WA**



Statistics: AISWA database (2005)

## Fees:

80% of member schools charge tuition fees which are less than \$5,000 per annum.

## Funding:

Independent schools receive funding from both the Australian and State Governments. The remainder of their income comes from fees.

On average, the government contribution to the recurrent income of independent schools is 57.3% with fees and fundraising providing the remaining 42.7%. The contribution to recurrent expenditure varies widely between schools and no independent school receives more government funding than a government school.

(Mrs) Audrey Jackson  
EXECUTIVE DIRECTOR